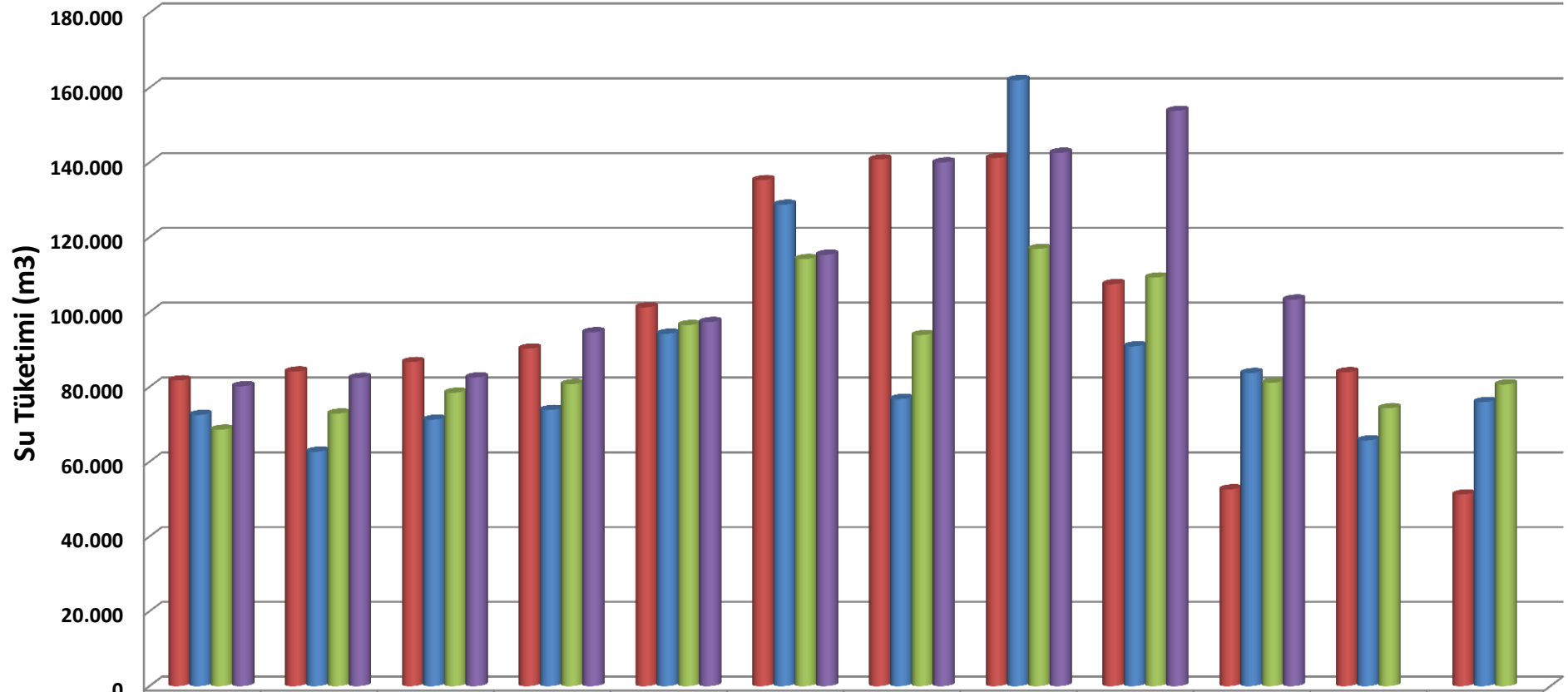


2008-2009-2010-2011 Yılı Su Tüketimleri



	OCAK	ŞUBAT	MART	NİSAN	MAYIS	HAZİRAN	TEMMUZ	AĞUSTOS	EYLÜL	EKİM	KASIM	ARALIK
■ 2008	81.743	84.127	86.646	90.250	101.287	135.281	140.821	141.204	107.484	52.607	83.925	51.233
■ 2009	72.522	62.695	71.246	73.838	94.231	128.721	76.791	162.054	90.855	83.705	65.696	75.950
■ 2010	68.565	72.884	78.459	80.737	96.545	114.195	93.862	116.907	109.249	81.100	74.294	80.641
■ 2011	80.189	82.415	82.544	94.603	97.353	115.355	140.011	142.605	153.799	103.329		