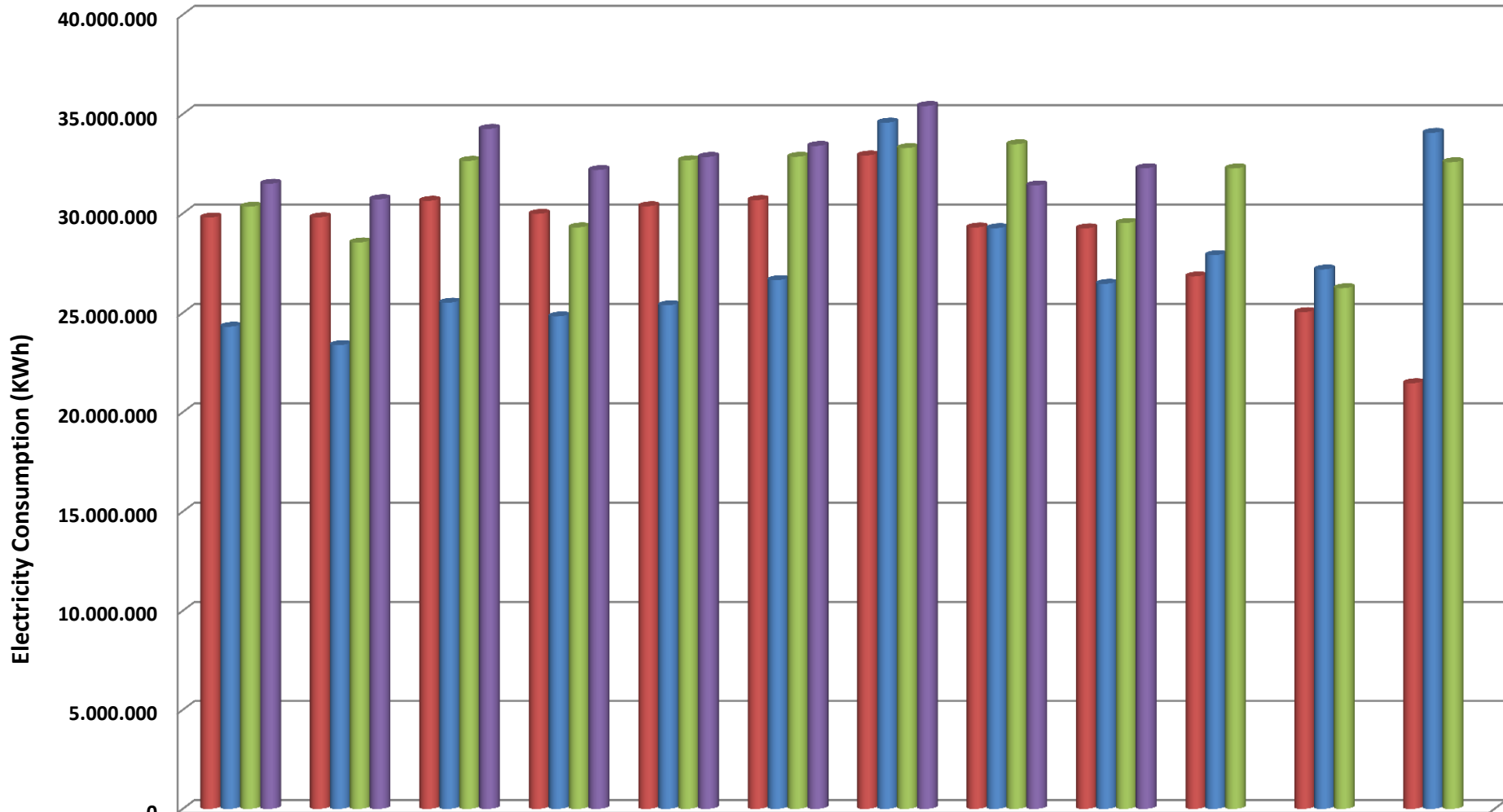


# 2008-2009-2010-2011 Electricity Consumption



|      | January    | February   | March      | April      | May        | June       | July       | August     | September  | October    | November   | December   |
|------|------------|------------|------------|------------|------------|------------|------------|------------|------------|------------|------------|------------|
| 2008 | 29.799.000 | 29.808.900 | 30.637.728 | 29.980.764 | 30.363.696 | 30.674.952 | 32.919.876 | 29.295.684 | 29.252.580 | 26.833.280 | 25.035.550 | 21.459.820 |
| 2009 | 24.302.980 | 23.377.204 | 25.511.071 | 24.822.417 | 25.381.634 | 26.648.270 | 34.572.640 | 29.260.970 | 26.461.890 | 27.905.580 | 27.182.910 | 34.059.150 |
| 2010 | 30.339.820 | 28.542.660 | 32.645.760 | 29.300.190 | 32.677.830 | 32.852.020 | 33.290.360 | 33.482.840 | 29.521.040 | 32.268.000 | 26.241.190 | 32.579.630 |
| 2011 | 31.495.880 | 30.717.230 | 34.257.050 | 32.186.400 | 32.845.440 | 33.400.190 | 35.408.310 | 31.412.400 | 32.277.190 |            |            |            |